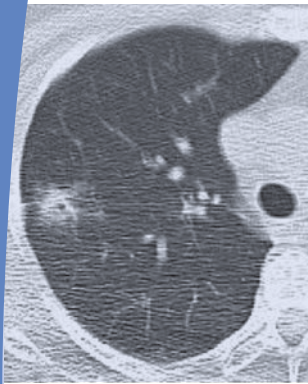
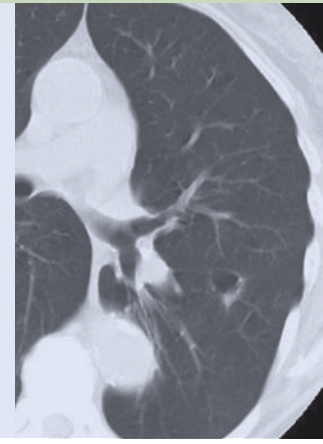
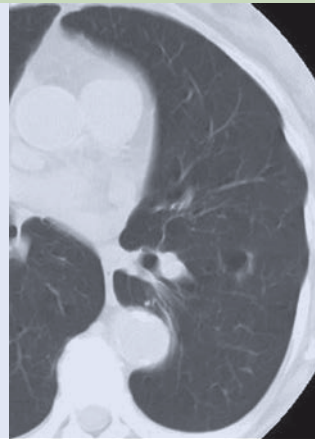
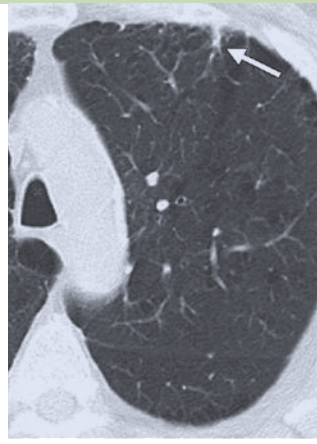


Presented in cooperation with the Society of Thoracic Radiology



ARRS  
2015

# Lung Cancer Screening Symposium:

A PRACTICAL APPROACH

October 9–10, 2015  
Hilton Tampa Downtown  
Tampa, Florida, or ONLINE

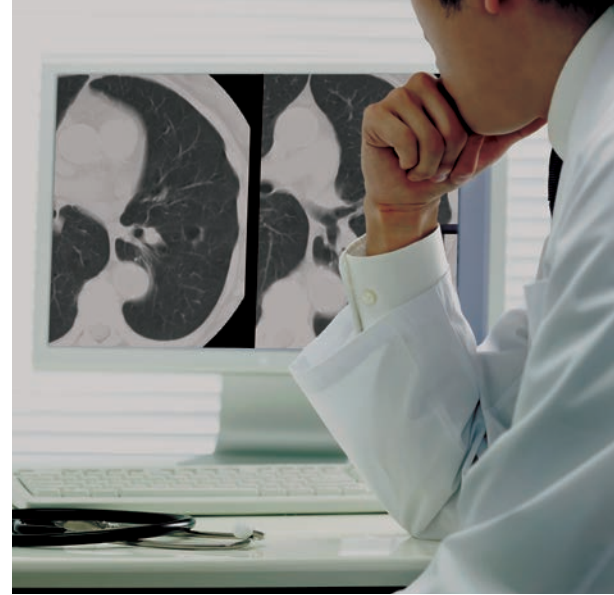
Register by **August 28**  
to receive the lowest rates.



# Participate in Tampa or Online

Participate in our newest Symposium in Tampa or online to enhance your skills in this rapidly growing field of radiology. In-Person and Virtual participants can:

- Earn up to **11 CME credits**.
- Develop expertise in the interpretation and management of screen-detected nodules.
- Understand the optimization parameters for low-dose CT imaging.
- Gain strategies to develop a comprehensive lung cancer screening program.
- And more!



## CME Credit Information

ARRS is accredited by the Accreditation Council for Continuing Medical Education (ACCME) to provide continuing medical education activities for physicians.

ARRS designates this live educational activity for a maximum of 11 *AMA PRA Category 1 Credits™*. Physicians should claim only the credit commensurate with the extent of their participation in the activity.

# Achieve Results

In November 2014, the U.S. Centers for Medicare and Medicaid Services (CMS) approved lung cancer screening for Medicare recipients. Following the CMS decision, demand for screening services continues to rise. As a result, practicing radiologists are faced with implementing new lung cancer screening programs in widely diverse practice settings. This Symposium will provide the necessary education and training to improve your image interpretation skills as well as insight to developing a comprehensive lung cancer screening program to help you stay relevant in the chest imaging field.

## Learning Outcomes

By attending the 2015 Lung Cancer Screening Symposium, participants will be able to:

- Interpret the epidemiology of lung cancer
- Recognize the protean imaging manifestations of lung cancer
- Become familiar with the findings of the National Lung Screening Trial and understand their impact on the current practice of lung cancer screening
- Acquire expertise in the detection and characterization of pulmonary nodules
- Obtain imaging protocols for low dose lung cancer screening
- Review the essentials of establishing a lung cancer screening program
- Apply Lung-RADS™ to the reporting of low dose lung cancer screening CT studies



## Early-Bird Pre-Registration Deadline

Register by  
**Aug. 28**  
to receive the  
lowest rates!

The early-bird pre-registration deadline is Friday, August 28. After this date, the regular pre-registration fees will apply.

## Three ways to register

### REGISTER ONLINE

[www.arrs.org/Lung](http://www.arrs.org/Lung)

### REGISTER BY FAX

(703) 729-4839

### REGISTER BY MAIL

ARRS Meeting Registration  
44211 Slatestone Court  
Leesburg, VA 20176-5109

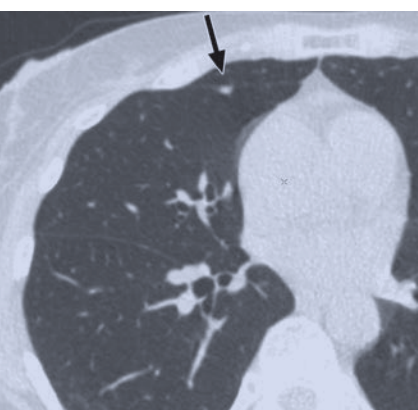
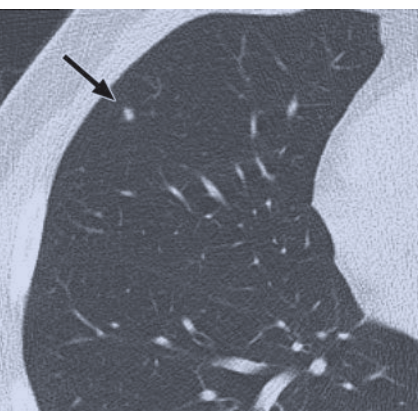
### QUESTIONS

Phone: 866-940-2777 or 703-729-3353  
Email: [meeting@arrs.org](mailto:meeting@arrs.org)  
Office Hours: Monday–Friday  
8:30 am – 5:00 pm Eastern Time Zone

**ARRS**  
Your Medical Imaging Society  
CONNECT • LEARN • ADVANCE



# Symposium Schedule



## Friday, October 9

### SESSION SCHEDULE—IN TAMPA AND ONLINE

All times reflect the Eastern Time Zone

TIME	SESSION TOPIC	FACULTY
7:00–8:00 am	Registration/Continental Breakfast (In-Person only)	
8:00–8:05 am	Introduction/Welcome	Jeremy Erasmus, MD
8:05–8:30 am	Lung Cancer Epidemiology	William Black, MD
8:30–9:00 am	Lung Cancer Clinical Presentation	Cris Meyer, MD
9:00–9:30 am	Imaging Manifestations of Lung Cancer	Melissa Rosado de Christenson, MD
9:30–10:00 am	Missed Lung Cancer	Gerald Abbott, MD
10:00–10:30 am	Beverage Break	
10:30–11:00 am	Basic Principles of Screening	Cris Meyer, MD
11:00–11:30 am	Findings of the National Lung Screening Trial	William Black, MD
11:30 am–12:00 noon	Society's Perspective on Lung Cancer Screening	Gerald Abbott, MD
12:00 noon–12:30 pm	Establishing a Lung Cancer Screening Program	Brett Carter, MD
12:30–1:30 pm	Lunch on Your Own	
1:30–2:00 pm	Differential Diagnosis of the Solitary Pulmonary Nodule	Cris Meyer, MD
2:00–2:30 pm	Imaging Characterization of Pulmonary Nodules	Myrna Godoy, MD
2:30–3:00 pm	Follow-up and Management of Indeterminate Lung Nodules Outside of Screening	Jane Ko, MD
3:00–3:30 pm	Beverage Break	
3:30–4:00 pm	Histologic Classification of Pulmonary Adenocarcinoma	Myrna Godoy, MD
4:00–4:30 pm	Calcium Scoring as Part of Lung Cancer Screening	Brett Carter, MD
4:30–5:00 pm	Eligibility Criteria for Lung Cancer Screening	Jane Ko, MD
5:00–5:30 pm	Question and Answer Session	

## Saturday, October 10

### SESSION SCHEDULE—IN TAMPA AND ONLINE

All times reflect the Eastern Time Zone

TIME	SESSION TOPIC	FACULTY
7:00–8:00 am	Continental Breakfast (In-Person only)	
8:00–8:30 am	Technique for Low-Dose CT Screening and Radiation Dose	Caroline Chiles, MD
8:30–9:00 am	Use of Low-Dose CT Outside of Screening	Jane Ko, MD
9:00–9:30 am	Reporting Lung Screening Results: Lung–RADS™	Caroline Chiles, MD
9:30–10:00 am	Beverage Break	
10:00–10:30 am	Engaging the Patient: An Opportunity for Direct Communication and Increased Radiologist Visibility	Melissa Rosado de Christenson, MD
10:30–11:00 am	Screening the Medicare Patient	Jeremy Erasmus, MD
11:00–11:30 am	Future Directions in Lung Cancer Screening	Caroline Chiles, MD
11:30 am–12:00 noon	Question and Answer Session	

“ARRS provides a vibrant community in which radiologists can participate and learn from each other. That’s really the hallmark of ARRS. . . we help each other build a better profession.”

—RUTH CARLOS, MD



[www.arrs.org/Lung](http://www.arrs.org/Lung)

**ARRS**  
Your Medical Imaging Society  
CONNECT • LEARN • ADVANCE

# Join us in Downtown Tampa

Downtown Tampa is where past and present cultures come together in must-see architectural works, festival inspiring food and fine-dining, theatrical and musical performances, and much more. See classic and modern architecture from the grand movie palace, Tampa Theatre, to the Rivergate Tower, Tampa's only cylindrical sky scraper. Take a stroll through Curtis Hixon Waterfront Park, home to festivals and musical performances, or grab a bite at the Tampa Riverwalk along the water.



## Symposium Hotel

The Symposium will take place at the Hilton Tampa Downtown in the heart of downtown Tampa. Within walking distance you will find the Tampa Bay Performing Arts Center, the Florida Aquarium, Channelside Bay Plaza, the Port of Tampa, and much more.

### Reserve Your Room:

To book your room call (813) 204-3000 and identify yourself as attending the ARRS Lung Cancer Screening Symposium, or book it online at [www.arrs.org/Lung](http://www.arrs.org/Lung).

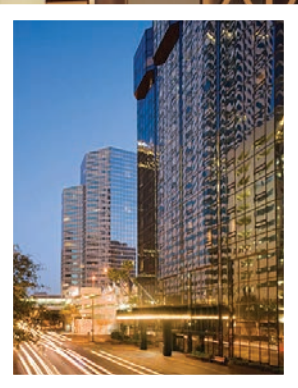


### Hilton Tampa Downtown

211 North Tampa Street, Tampa, Florida 33602  
Phone: 813-204-3000

RESERVATION DEADLINE:

**Tuesday, September 15, 2015**



## Hilton Tampa Downtown Rates

You must reserve your room no later than **September 15** to receive the ARRS discounted room rates. Please see rates and policies below.

ROOM TYPE	SINGLE	DOUBLE
RATE	\$139	\$139

All rates are quoted in U.S. funds and subject to applicable state and local taxes (currently 12% sales tax).

## HOTEL CONFIRMATIONS

When you make your reservations online, you will receive a confirmation e-mail from the hotel along with instructions on how to modify or cancel a reservation.

## CANCELLATIONS/CHANGES

Cancellations to sleeping rooms must be made 24 hours in advance of the 3:00 pm check in time of date of arrival to avoid a one-night room and tax charge. To cancel or modify your reservation, call 813-204-3000. ARRS is not able to answer any questions regarding your hotel reservation.

**ARRS**  
Your Medical Imaging Society  
CONNECT • LEARN • ADVANCE

# ARRS 2015 Lung Cancer Screening Symposium

## In-Person Registration Form

Register for the  
In-Person and Virtual Symposium  
at [www.arrs.org/Lung](http://www.arrs.org/Lung)

**October 9-10**

Virtual Registration form on page 10.

The In-Person Lung Cancer Screening Symposium schedule is based on the Eastern Time Zone.

First Name: \_\_\_\_\_ M.I.: \_\_\_\_\_ Last Name: \_\_\_\_\_

Degrees (MD, PhD, etc.): \_\_\_\_\_

Address: \_\_\_\_\_

City: \_\_\_\_\_ State/Province: \_\_\_\_\_ Zip/Postal Code: \_\_\_\_\_ Country: \_\_\_\_\_

Phone (please include country and city codes if applicable): \_\_\_\_\_ Fax: \_\_\_\_\_

E-mail (registration confirmation is sent to this e-mail address): \_\_\_\_\_

Emergency Contact: \_\_\_\_\_ Phone: \_\_\_\_\_

### General Registration Fees *Please circle the appropriate category*

	Early-Bird Fees Through August 28	Pre-Registration Fees Through September 25	On-Site Fees
ARRS Physician Member	\$499	\$599	\$699
ARRS In-Training Member	\$249	\$349	\$449
Nonmember	\$999	\$1,099	\$1,199

Nonmembers may apply for ARRS membership and pay the member fees. Go to [www.arrs.org/Lung](http://www.arrs.org/Lung) or call 1-866-940-2777 or 703-729-3353 for details.

Upgrade In-Person Registration to Include Virtual Meeting \$99

**Total Fees: \$** \_\_\_\_\_

\_\_\_ Check Enclosed (in U.S. funds drawn on a U.S. bank made payable to ARRS)

\_\_\_ Credit Card: \_\_\_ Visa \_\_\_ MasterCard \_\_\_ American Express

Card Holder's Name: \_\_\_\_\_

Credit Card #: \_\_\_\_\_ Expiration Date: \_\_\_\_\_

Signature: \_\_\_\_\_

Register online at [www.arrs.org/Lung](http://www.arrs.org/Lung) or by completing this form and faxing it to 703-729-4839 or mailing it to ARRS, Meeting Registration, 44211 Slatestone Court, Leesburg, VA 20176-5109.

Please contact ARRS if you have any questions at 866-940-2777 or 703-729-3353 or [meeting@arrs.org](mailto:meeting@arrs.org). Registrations by phone will not be accepted. Cancellation requests received by Friday, September 25, 2015, will be refunded after the meeting, minus a \$50 USD cancellation fee. The \$50 USD cancellation fee is nonrefundable. After Friday, September 25, 2015, absolutely no refunds will be issued. Need to change your registration from the In-Person Meeting to the Virtual Meeting? Written requests must be received no later than September 25, 2015, and a \$50 USD transfer fee will be charged. After September 25, 2015, requests to transfer from one meeting to the other cannot be accepted and processed.



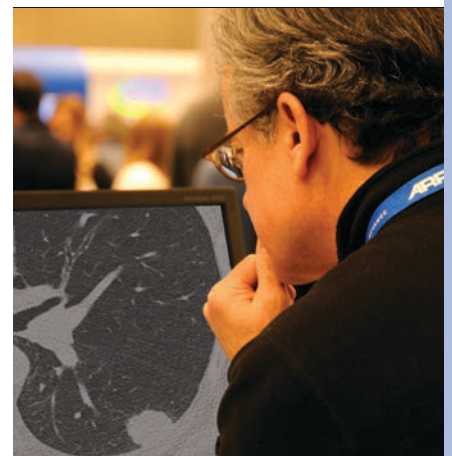
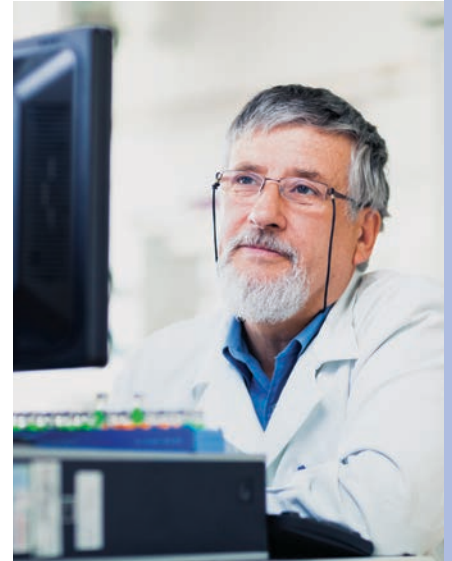
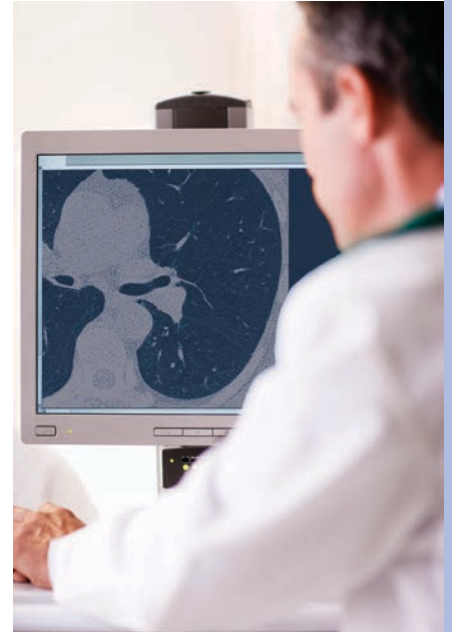
# Participate Online

**ARRS**  
Your Medical Imaging Society  
CONNECT • LEARN • ADVANCE



Participate online in the 2-Day Virtual Lung Cancer Screening Symposium, **October 9–10**, to receive the same excellent education that ARRS is known for and **earn 11 CME credits.**

With the Virtual Symposium, participants can view live streaming of lectures, interact with faculty online, and access free recordings from October 19–November 2 to refresh their knowledge after earning credit. View the schedule on pages 4–5. See page 10 for registration form.



## Virtual Registration Form

Register for the  
In-Person and Virtual Symposium  
at [www.arrs.org/Lung](http://www.arrs.org/Lung)

In-Person Registration form on page 8.

### October 9-10

The Virtual Lung Cancer Screening Symposium schedule is based on the Eastern Time Zone.

First Name: \_\_\_\_\_ M.I.: \_\_\_\_\_ Last Name: \_\_\_\_\_

Degrees (MD, PhD, etc.): \_\_\_\_\_

Address: \_\_\_\_\_

City: \_\_\_\_\_ State/Province: \_\_\_\_\_ Zip/Postal Code: \_\_\_\_\_ Country: \_\_\_\_\_

Phone (please include country and city codes if applicable): \_\_\_\_\_ Fax: \_\_\_\_\_

E-mail (registration confirmation is sent to this e-mail address): \_\_\_\_\_

Nonmembers may apply for ARRS membership and pay the member fees.  
Go to [www.arrs.org/Lung](http://www.arrs.org/Lung) or call 1-866-940-2777 or 703-729-3353 for details.

### General Registration Fees

Please circle the appropriate category

	Early-Bird Fees Through Friday, August 28	Pre-Registration Fees Through Friday, September 25
ARRS Physician Member	\$499	\$599
ARRS In-Training Member	\$249	\$349
Nonmember	\$999	\$1,099

Total Fees: \$ \_\_\_\_\_

\_\_\_ Check Enclosed (in U.S. funds drawn on a U.S. bank made payable to ARRS)

\_\_\_ Credit Card: \_\_\_ Visa \_\_\_ MasterCard \_\_\_ American Express

Card Holder's Name: \_\_\_\_\_

Credit Card #: \_\_\_\_\_ Expiration Date: \_\_\_\_\_

Signature: \_\_\_\_\_

Register online at [www.arrs.org/Lung](http://www.arrs.org/Lung) or by completing this form and faxing it to 703-729-4839 or mailing it to ARRS, Meeting Registration, 44211 Slatestone Court, Leesburg, VA 20176-5109.

Please contact ARRS if you have any questions at 866-940-2777 or 703-729-3353 or [meeting@arrs.org](mailto:meeting@arrs.org). Registrations by phone will not be accepted. Cancellation requests received by Friday, September 25, 2015, will be refunded after the meeting, minus a \$50 USD cancellation fee. The \$50 USD cancellation fee is nonrefundable. After Friday, September 25, 2015, absolutely no refunds will be issued. Need to change your registration from the Virtual Meeting to the In-Person Meeting? Written requests must be received no later than September 25, 2015, and a \$50 USD transfer fee will be charged. After September 25, 2015, requests to transfer from one meeting to the other cannot be accepted and processed.



**SAVE  
THE DATE**

April 17–22, 2016



# Where Top Radiologists COME TO LEARN

With the highest quality of practice-based education and the latest research, this is a must-attend event.



**ANNUAL MEETING**

April 17–22, 2016  
Los Angeles Convention Center

**CAN'T COME TO LOS ANGELES?**

**PARTICIPATE ONLINE WITH THE VIRTUAL MEETING.**

THE MARRIOTT

2015 ARRS

# Lung Cancer Screening Symposium:

October 9–10, 2015 • Tampa, Florida

## A PRACTICAL APPROACH

Register by  
**Aug. 28**  
for the  
lowest rates!

**ARRS**  
Your Medical Imaging Society

44211 Slatestone Court  
Leesburg, VA 20176-5109

2015 ARRS

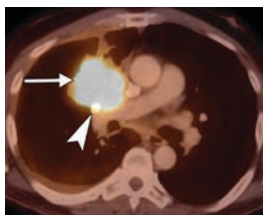
# Lung Cancer Screening Symposium:

## A PRACTICAL APPROACH

October 9–10 • Tampa, Florida

**ARRS**  
Your Medical Imaging Society  
CONNECT • LEARN • ADVANCE

Presented in cooperation with the Society of Thoracic Radiology



**PARTICIPATE IN TAMPA OR ONLINE!**